

TB229

Frequency = 100-1000MHz

Pout = 80W

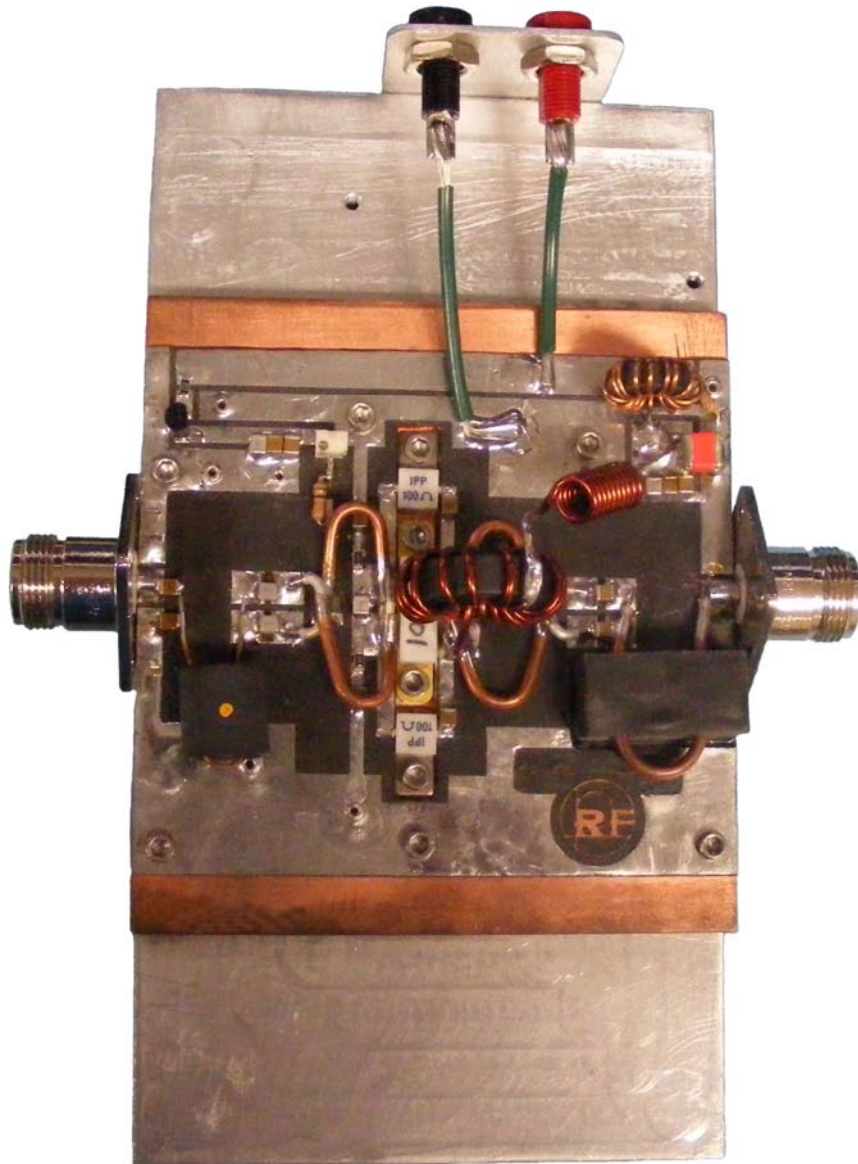
Gain = 14dB

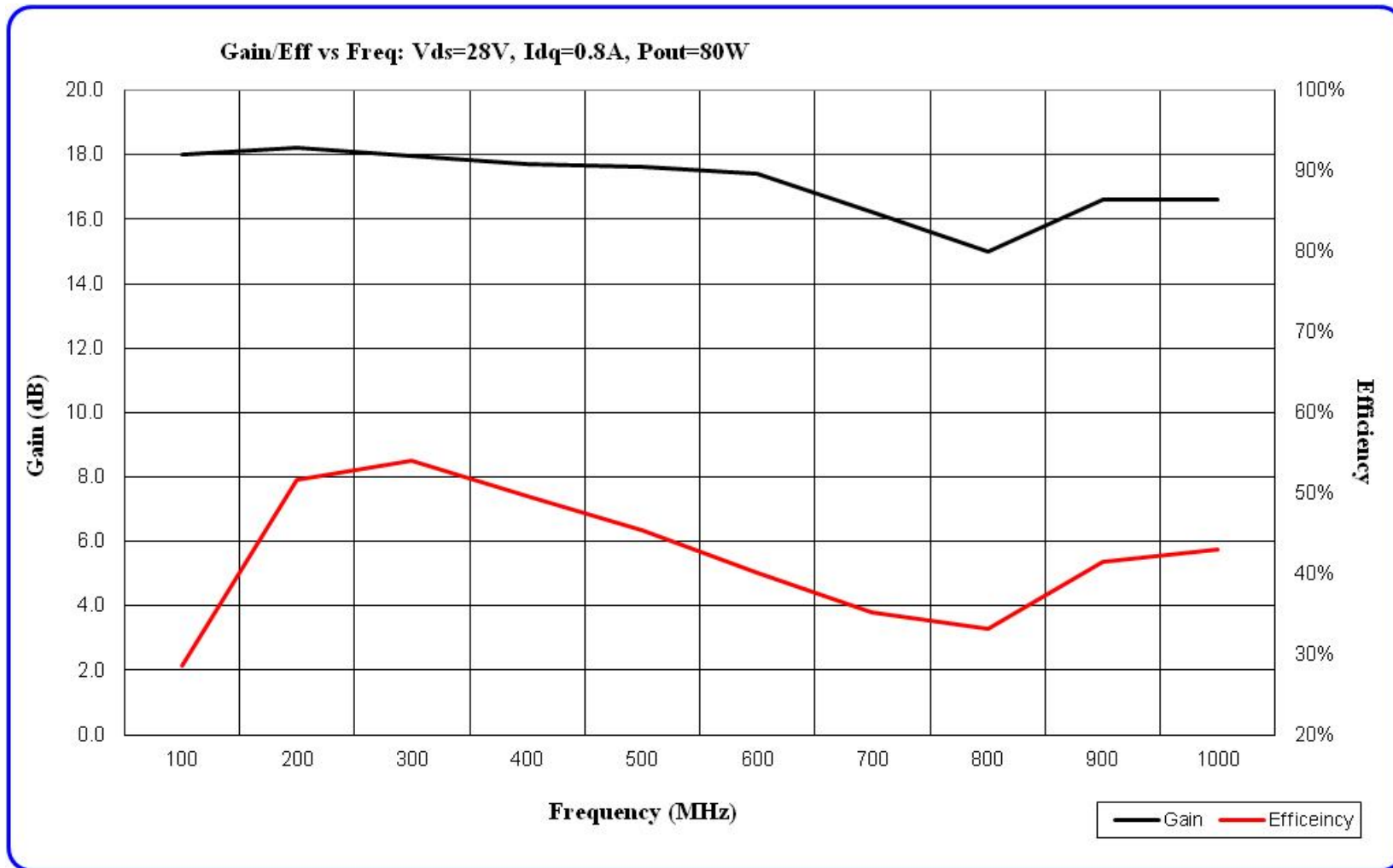
Vds = 28Vdc

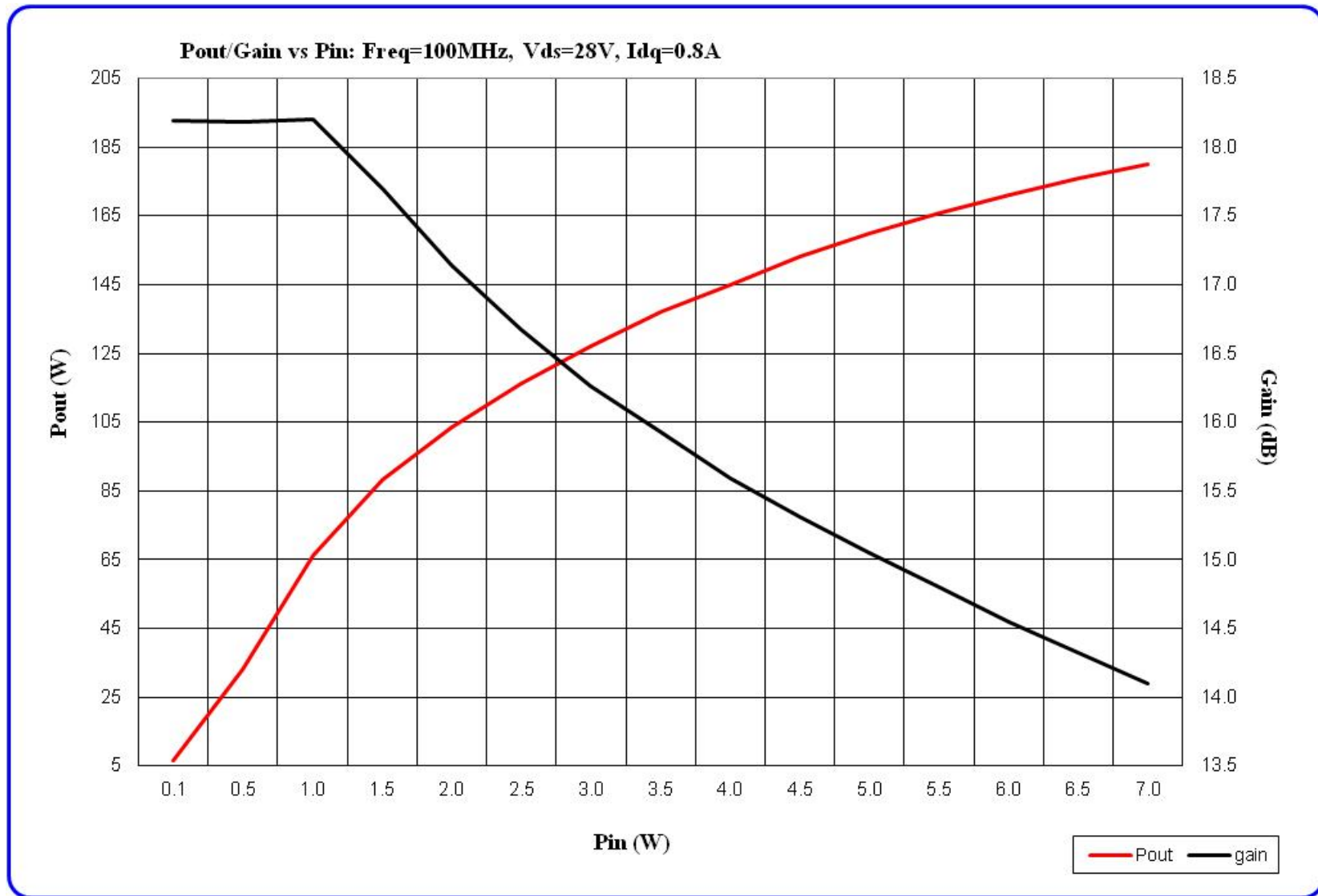
Idq = 0.8A

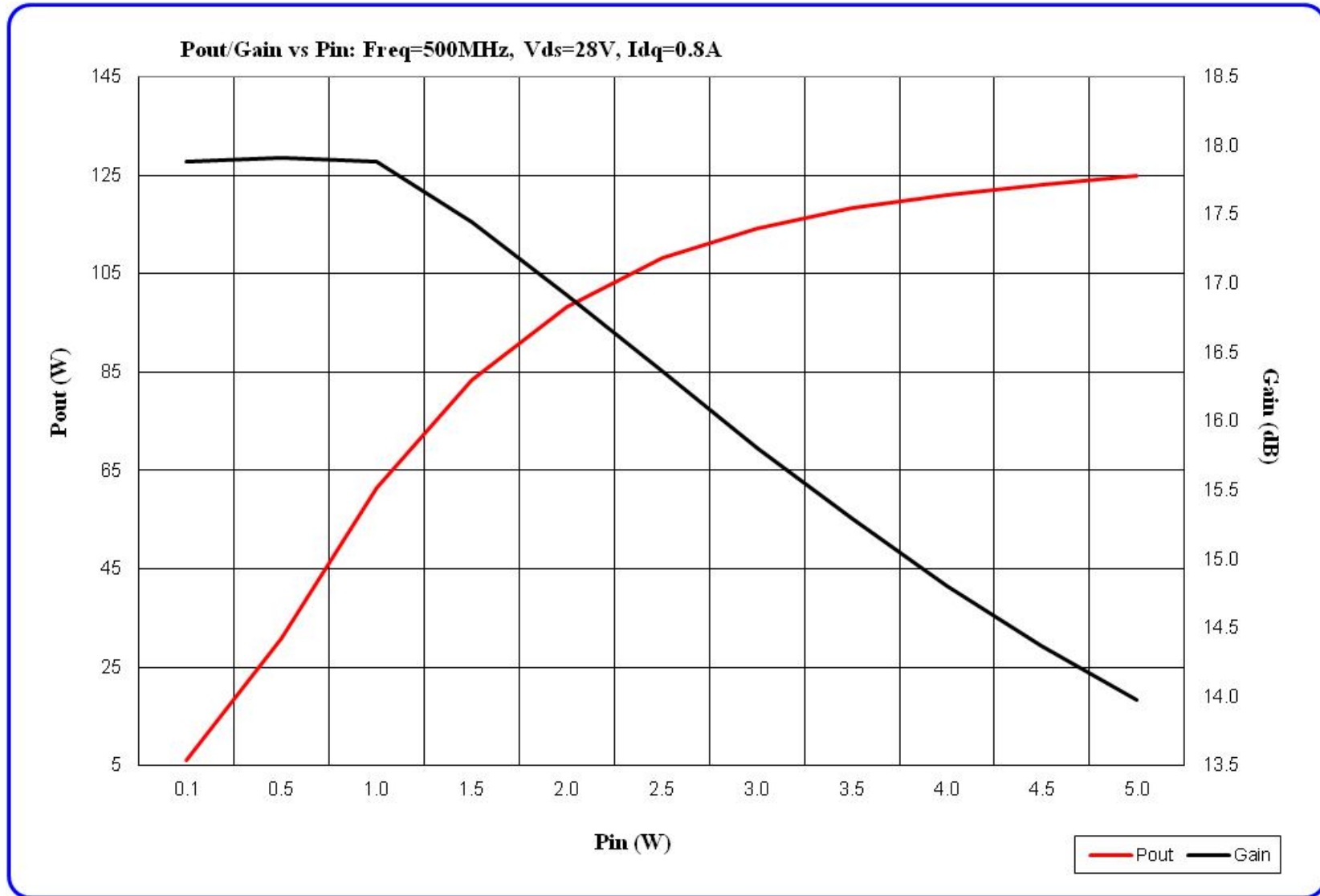
Efficiency = 30 to 50%

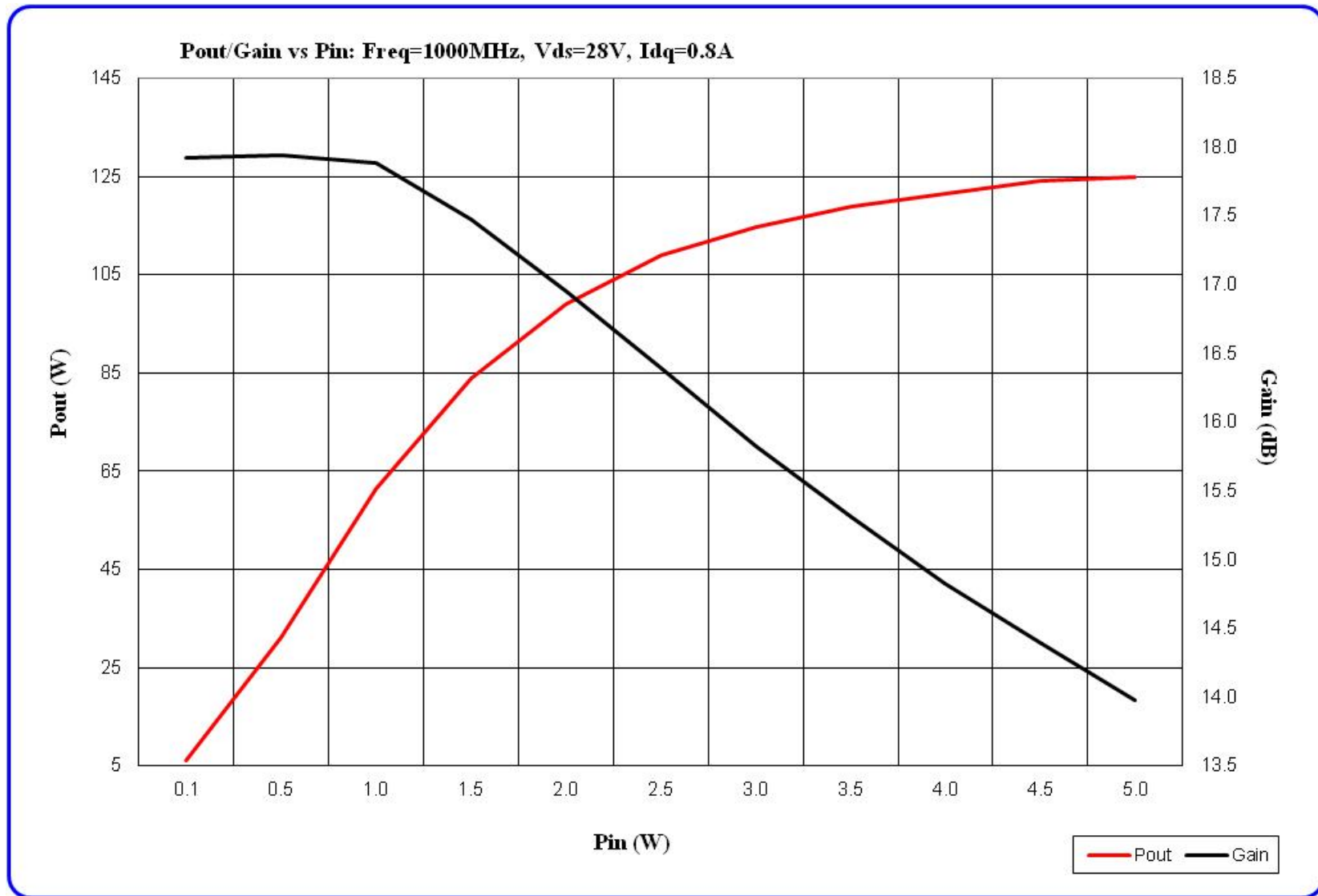
LB2401

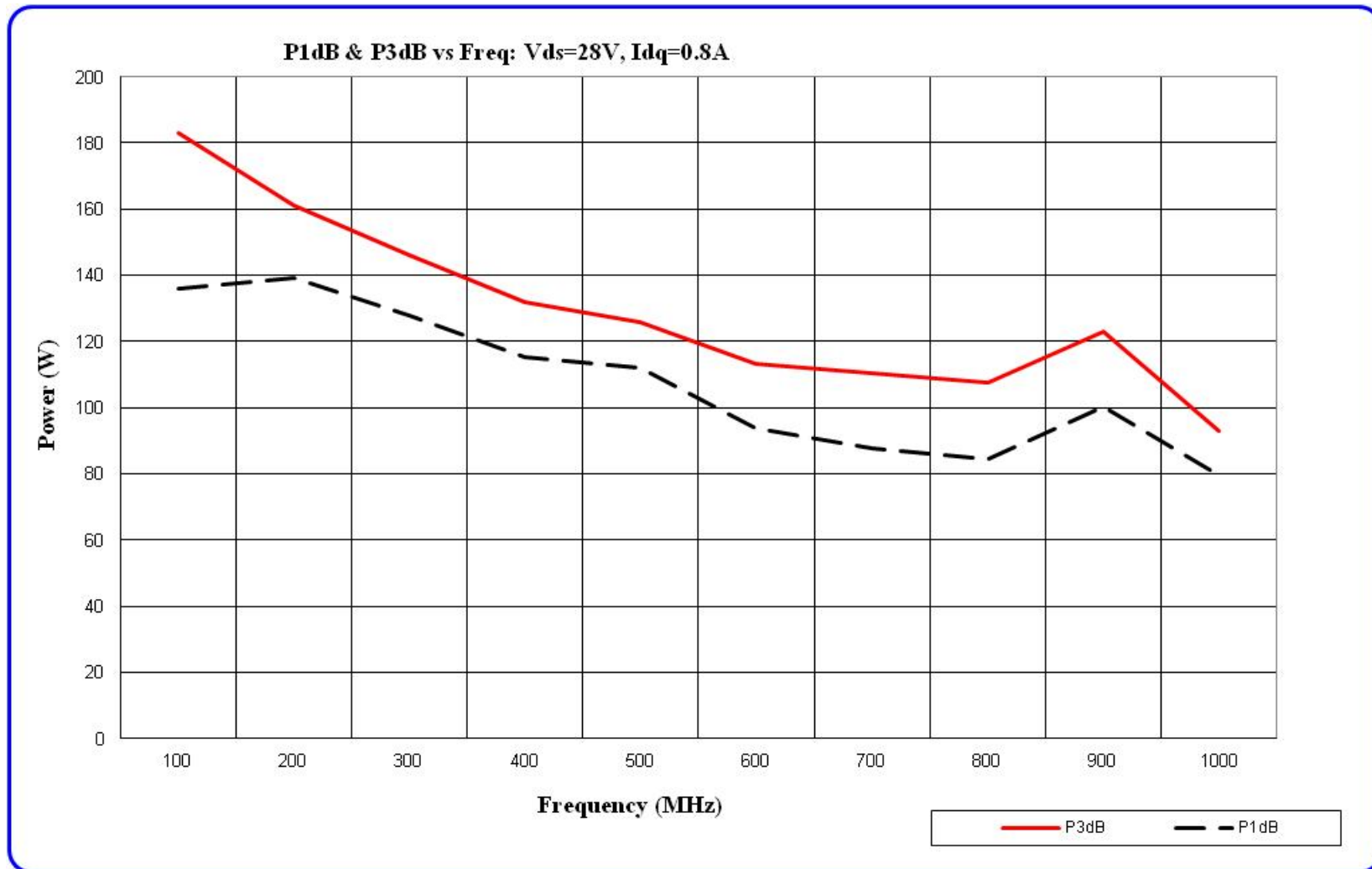


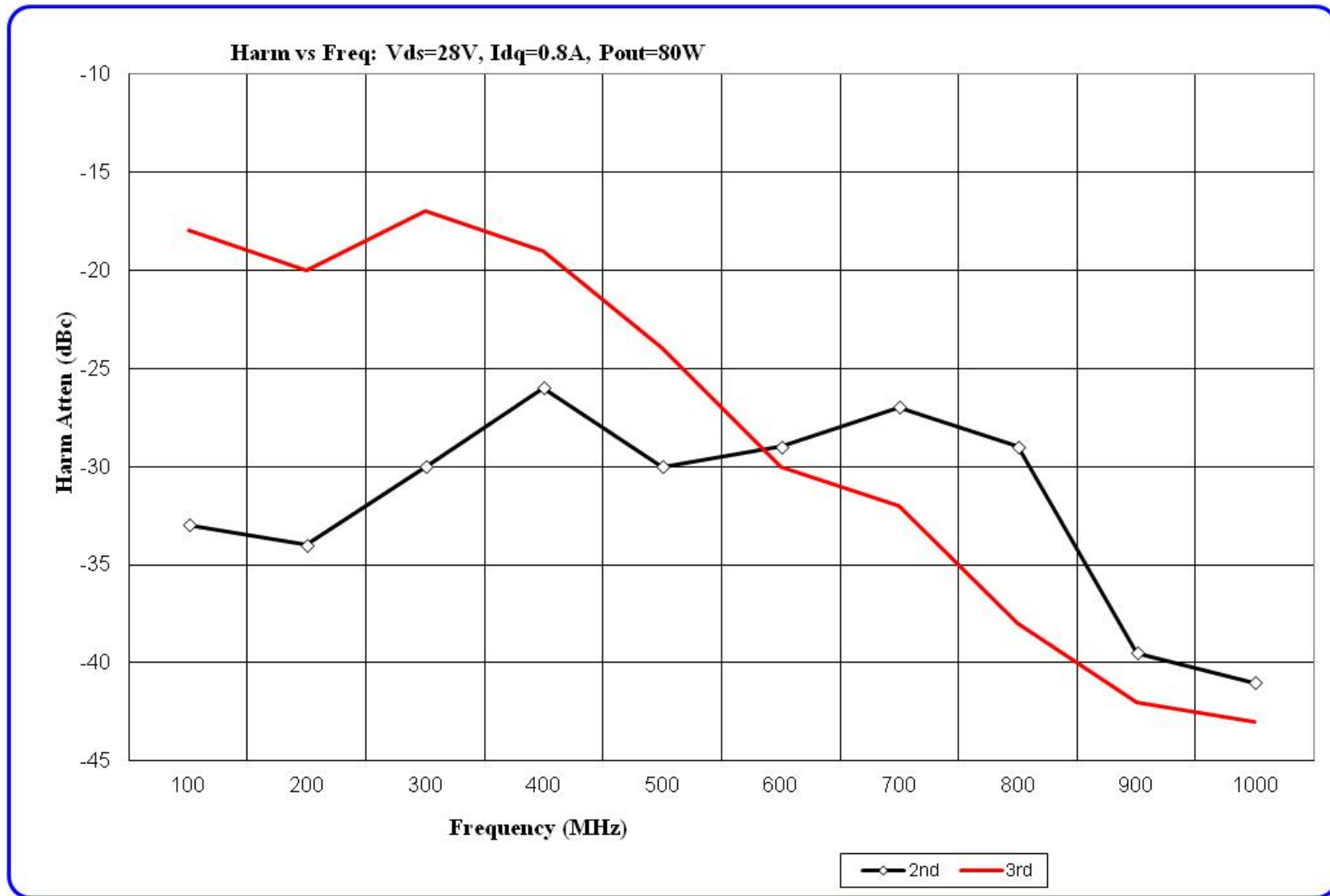


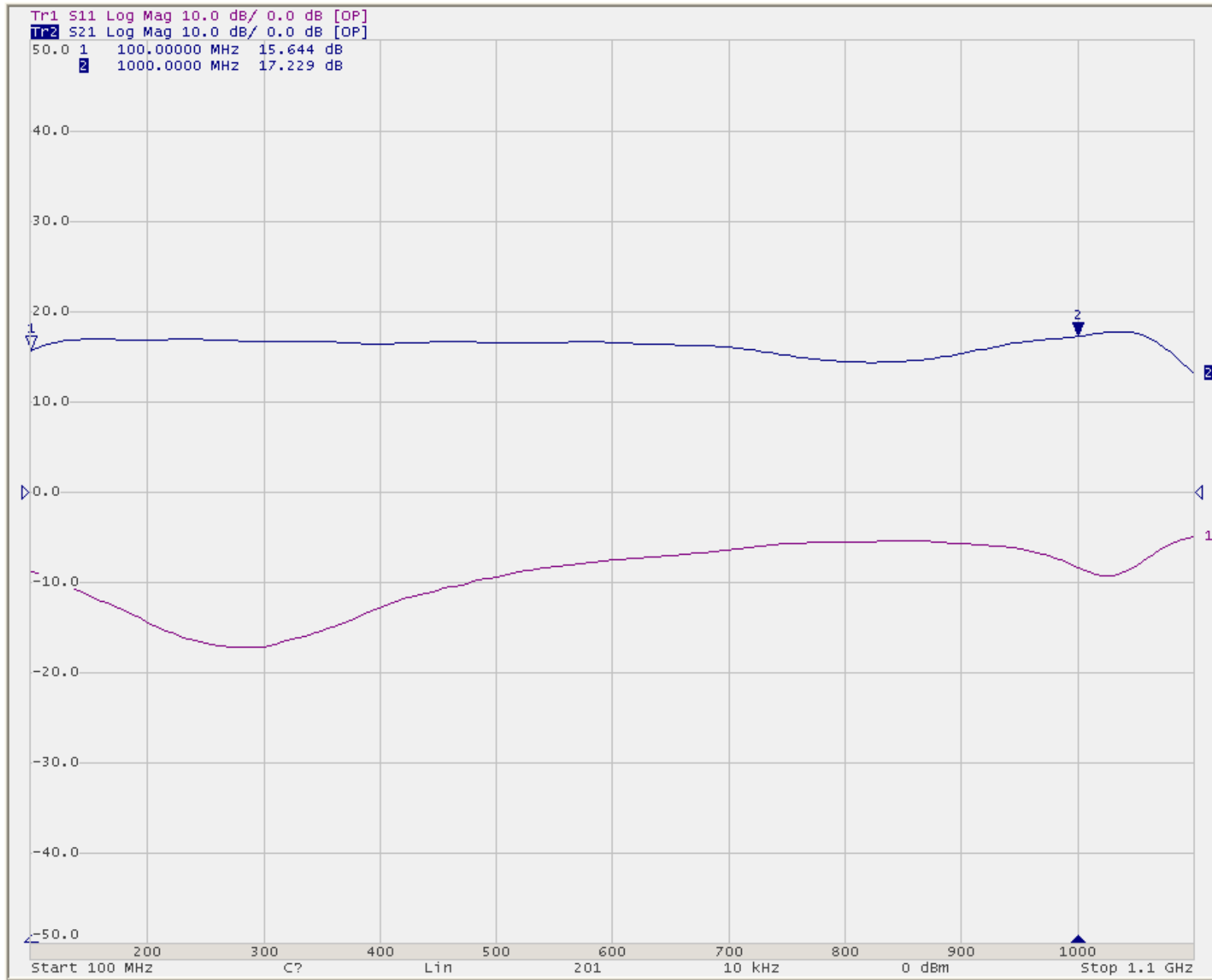




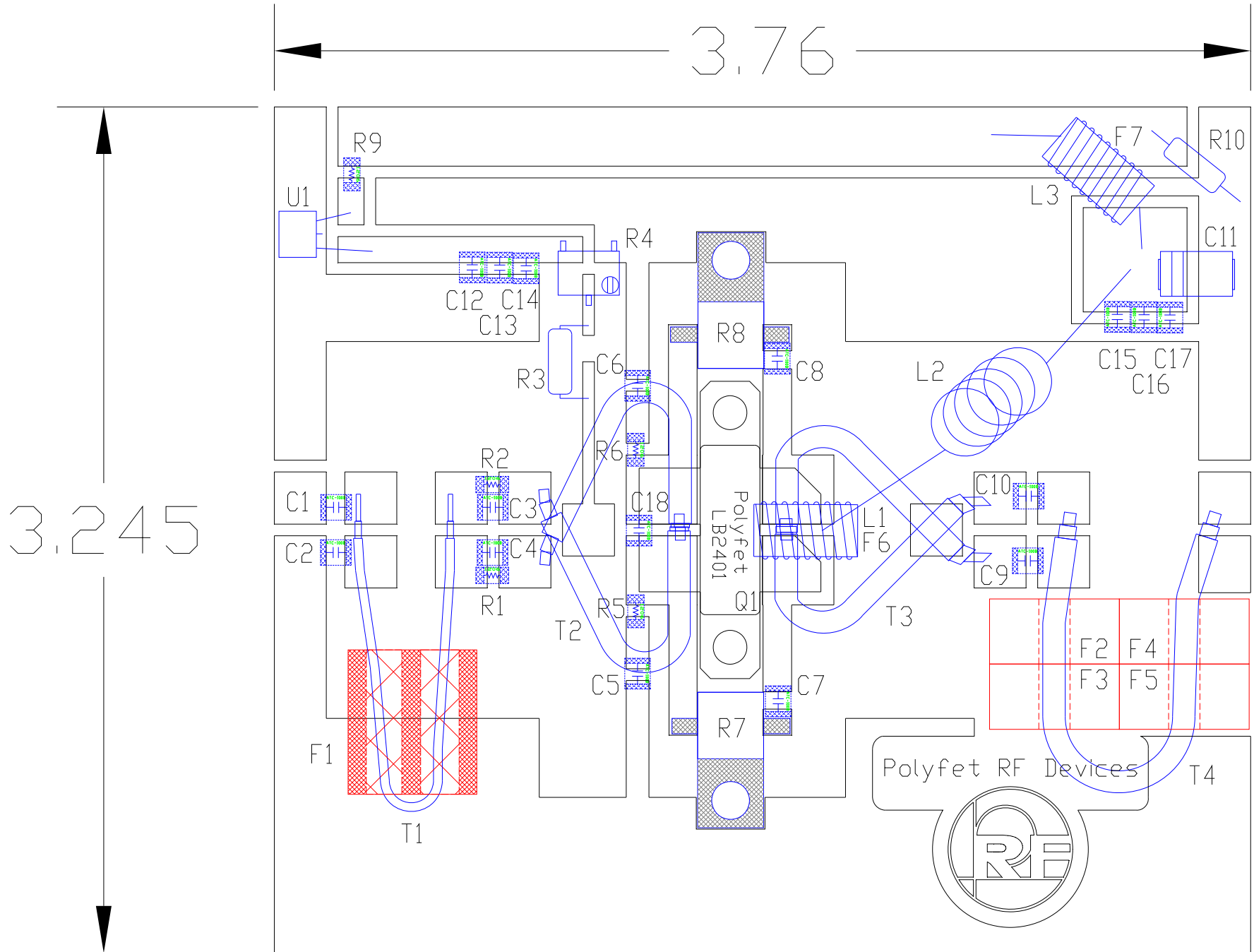






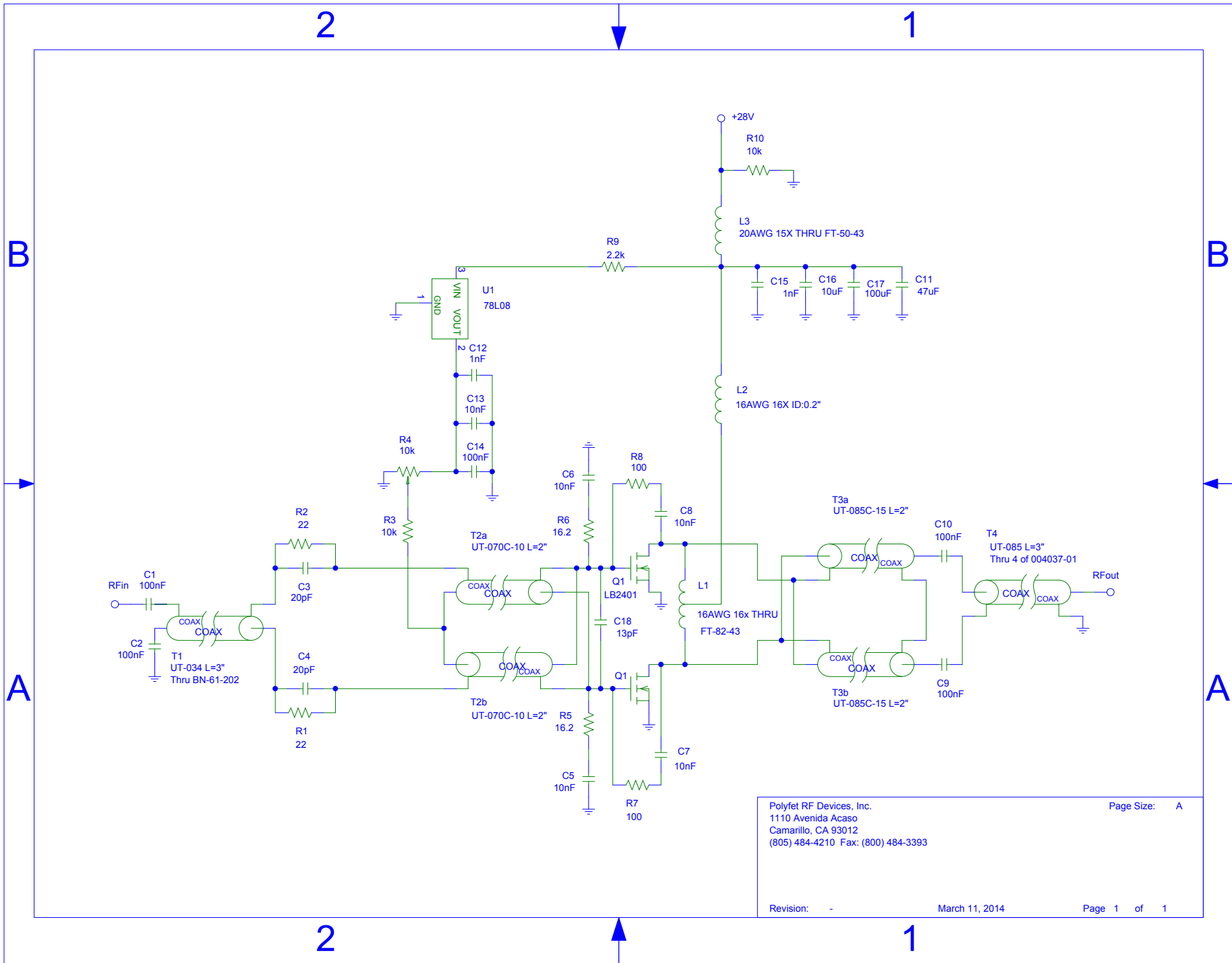


TB229 28V 0.8A 0dBm



Polyfet TB229

NOMENCLATURE	DESCRIPTION	VENDER	PART #
C1,C2,C9,C10,C14,C17	100nF 0.11"X0.11" CAPACITOR	PASSIVE PLUS	1111X104KW500
C3,C4	20pF 0.11"X0.11" CAPACITOR PASSIVE	PLUS	1111N200GW501X
C5,C6,C7,C8,C13,C16	10nF 0.11"X0.11" CAPACITOR	PASSIVE PLUS	1111X103KW500
C11	47uF 50V VISHAY TANTALUM CAPACITOR	MOUSER	71-597D476X0050Z2T
C12,C15	1nF 0.11"X0.11" CAPACITOR PASSIVE	PLUS	1111N102KW501X
C18	13pF 0.11"X0.11" CAPACITOR PASSIVE	PLUS	1111N130GW501X
F1	125u BINOCULAR FERRITE	AMIDON	BN-61-202
F2,F3,F4,F5	100u "SQUAREOID" FERRITE	CERAMIC MAGNETICS	004037-01
F6	850u 0.82" TORROID FERRITE	AMIDON	FT-82-43
F7	850u 0.5" TORROID FERRITE	AMIDON	FT-50-43
L1	16AWG 16X THRU "F6", CENTER-TAPPED	-	-
L2	16AWG 10X ID:0.2"	-	-
L3	20AWG 15X THRU "F7"	-	-
R1,R2	22 OHM 1206 SMD RESISTOR	PANASONIC Electronic Components	ERJ-8GEYJ220V
R3,R10	10k OHM 1/4W RESISTOR	PANASONIC Electronic Components	ERD-S2TJ103V
R4	10k OHM 5MM POTENTIOMETER	MURATA ELECTRONICS	PVG5A103C03R00
R5,R6	16.2 OHM 1206 SMD RESISTOR	VISHAY DALE	CRCW120616R2FKEAHP
R7,R8	100 OHM FLANGE MOUNT RESISTOR	INNOVATIVE POWER PRODUCTS	IPP-RB203-100
R9	2.2k OHM 1206 SMD RESISTOR	PANASONIC Electronic Components	ERJ-8GEYJ222V
T1	34mils 50ohm coax, L=3" AMAWAVE		UT-034
T2	70mils 10ohm coax, L=2" AMAWAVE		UT-070C-10
T3	85mils 15ohm coax, L=2" AMAWAVE		UT-085C-15
T4	85mils 50ohm coax, L=3" AMAWAVE		UT-085
U1	IC REG LDO 8V 0.1A TO92-3	DIODES, INC	AP78L08VL-A
Q1	LDMOS	POLYFET RF DEVICES, INC.	LB2401
PCB	Dble Side TEFLON Er=2.33 30mil 2oz copper		



Polyfet RF Devices, Inc.
 1110 Avenida Acaso
 Camarillo, CA 93012
 (805) 484-4210 Fax: (800) 484-3393

Page Size: A

Revision: - March 11, 2014 Page 1 of 1